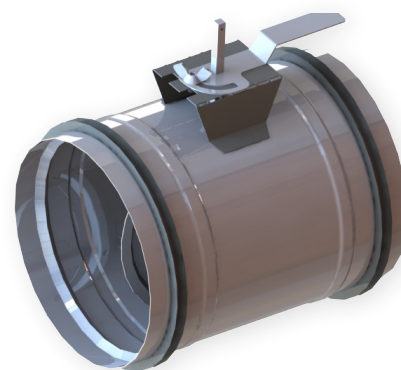


CIRCULAR VOLUME CONTROL DAMPER

RCO

RCO damper is a circular volume control damper in galvanized steel. RCO is designed to adjust the volume of airflow in ventilation networks for commercial HVAC applications.

The **RCO** control damper is manual or motorized (see the control table)



CODIFICATION

RC ———> **RC range** - Circular damper

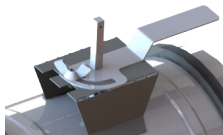
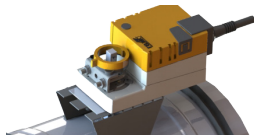
X ———> **0** - Not classified

CONSTRUCTION

Casing
Galvanized steel <i>option : stainless steel 304 L or 316 L</i>
Seals ensuring good airtightness with the ductwork
Casing's airtightness class C according to EN 1751

Blade
Circular plate in galvanized steel <i>option : stainless steel 304 L or 316 L</i>

CONTROL

manual/motorized control (Control shaft 8 mm square)	Motorized damper
	

PERFORMANCES

	RCO
Downstream airtightness (EN 1751)	Not classified
Frame's airtightness (EN 1751)	Class C
Acceptable pressure	500 Pa
Acceptable velocity	12 m/s
Operating temperatures	from -20°C to +80°C

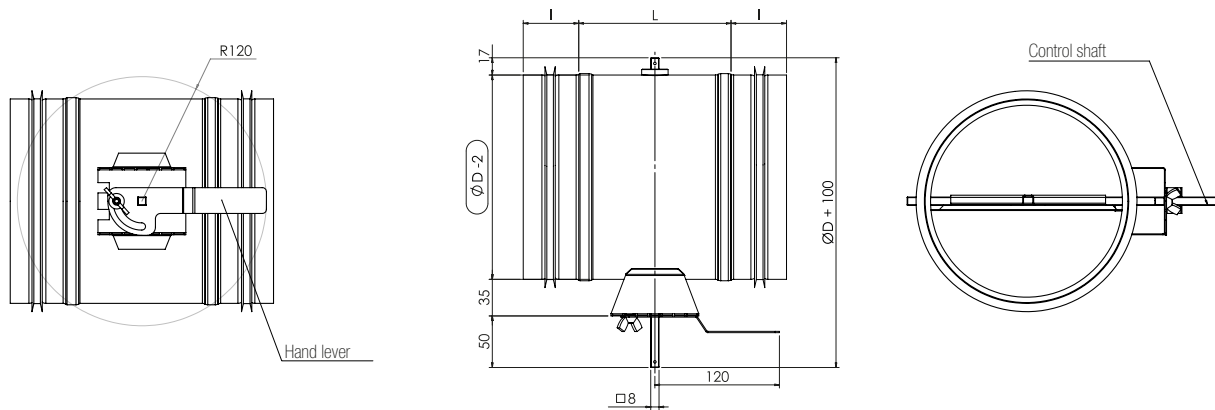
CIRCULAR VOLUME CONTROL DAMPER

RCO

DIMENSIONS AND RECOMMENDED TORQUES

Ø (mm)	L (mm)	l (mm)	Weight manual RCO (kg)	Weight motorized RCO (kg)	Torque (Nm)
80	100	35	0,4	0,9	2
100	100	35	0,4	0,9	2
125	100	35	0,5	1	2
160	100	35	0,6	1,1	2
200	100	35	0,8	1,3	2
250	100	55	1	1,5	4
300	120	55	1,4	1,9	4
315	120	55	1,5	2	8
355	120	85	1,7	2,2	8
400	150	85	2,2	2,7	10
500	150	85	9,9	3,4	10
560	180	85	3,7	4,2	15
630	180	85	4,3	4,8	15

RCO manual



RCO motorized

